



Made-to-order  
timber  
windows  
and doors

LOMAX  
+ WOOD



LOMAX  
+WOOD

Made-to-order  
timber  
windows  
and doors

North Barn  
Thoby Lane  
Mountnessing  
Essex CM15 0SY

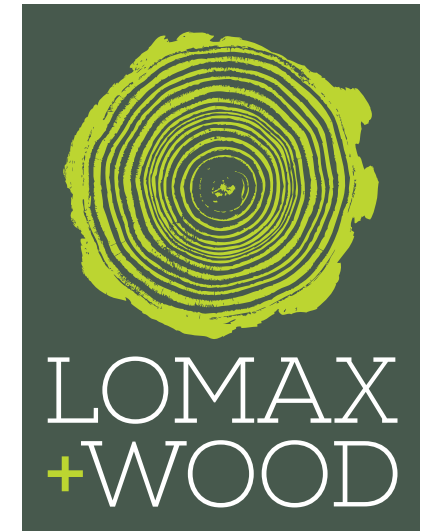
[sales@lomaxwood.co.uk](mailto:sales@lomaxwood.co.uk)

01277 353857



Chris Wood, formerly of Mumford & Wood, acquired Lomax + Wood Limited following a buyout of his partners to become sole shareholder in October 2014. After joining the company in June 2013 the company has gone through major changes including rebranding, a new website, technical IT system, the upgrading of product designs and a broadening of the overall quality timber window and door offer. The company, under its former brand of *Ambass-A-Door*, was established in 1994 as a wooden sash window specialist. Now Lomax + Wood offer a full and comprehensive range, including aluminium clad timber windows and doors.





Lomax+Wood supply made-to-order timber sash windows, casements and wooden doors to the commercial and consumer-based heritage and contemporary markets. All the ranges of these stylish, high performance timber windows and wooden doors are designed in house and are manufactured to suit your requirements. With a wealth of knowledge and experience, Lomax+Wood would be delighted to help you with your fenestration requirements. Contact us for your quotation today and the level of service will be tailored to suit your requirements.



**Lomax + Wood are specialists in the design and detailing of products for the conservation market.**

**We have supplied projects ranging from a Victorian terraced house, a country farm house in Wiltshire up to a six hundred bespoke box sash windows for an historic London landmark building. All our products use the latest treatments and finishes to provide durable low maintenance windows and doors.**

**Lomax + Wood are members of the British Woodworking Federation and FENSA.**



**Our in house knowledge and customer service means we are repeatedly specified by architects, developers and contractors. With many orders also being received through private recommendation.**



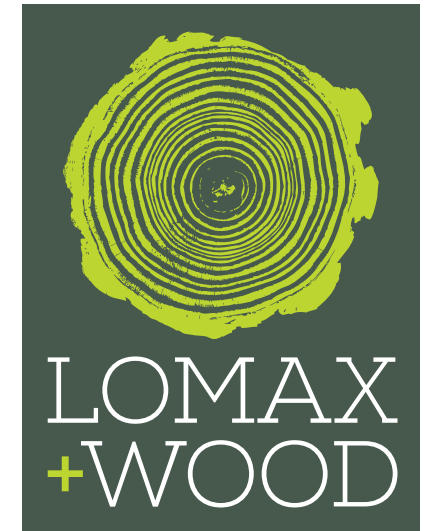
## Fitting Timber Windows and Doors by Lomax + Wood Limited

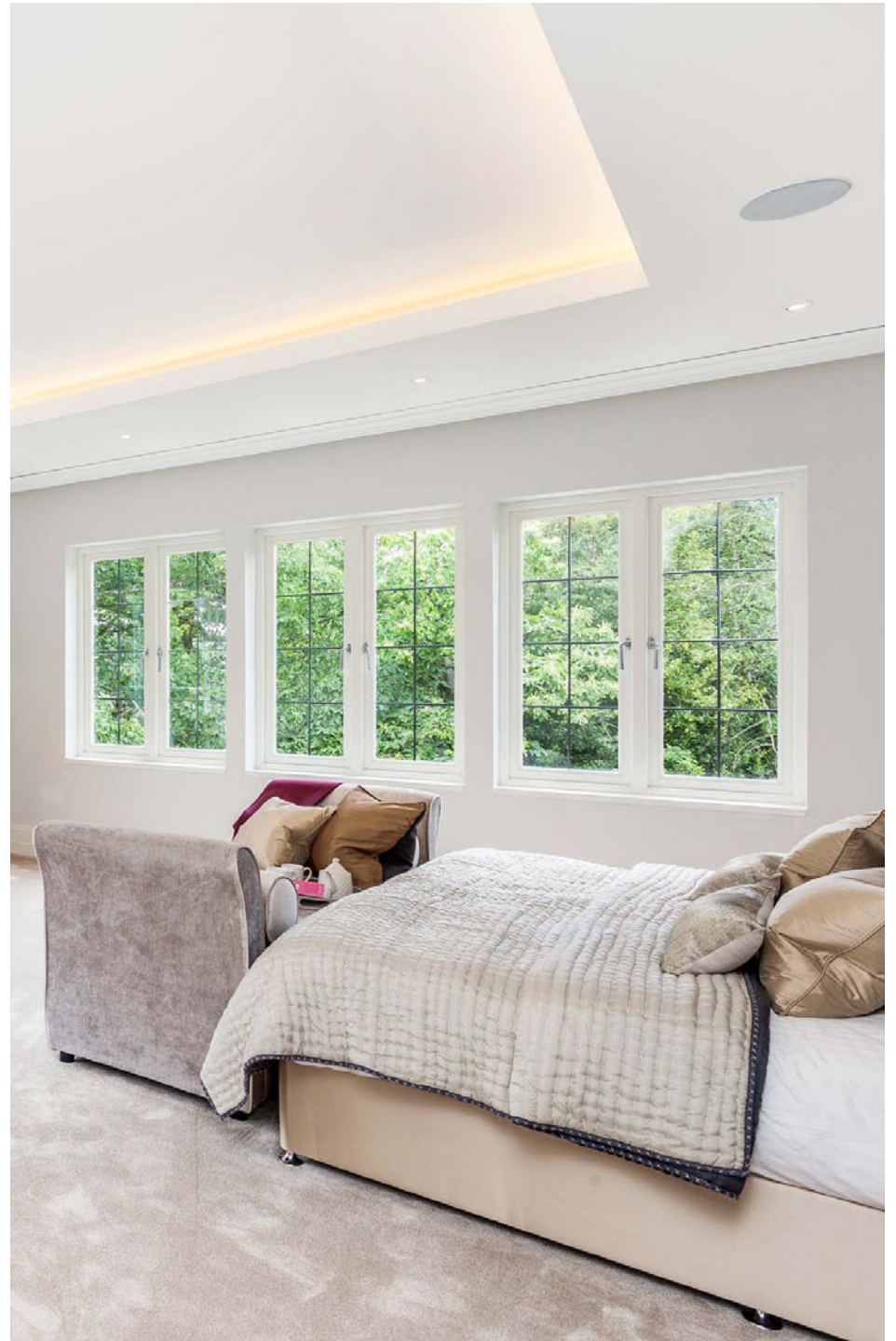
Lomax + Wood offer a full installation service for both developers and private homeowners. We tailor-make the service to suit the requirements of each, which varies from only fixing Lomax + Wood windows and wooden doors into position, through to a complete one stop solution for homeowners. In using this service only the final property decoration is left for completion by others.

**BUYING A SUPPLY AND FIT SERVICE FOR TIMBER WINDOWS AND DOORS ENSURES THERE IS ONLY ONE POINT OF CONTACT.**

## Coombe Hill Estate, Kingston upon Thames

High performance, made-to-order, timber, traditional flush ledged light casement windows and doors from the Lomax + Wood Kensington & Chelsea range have been specified for a stunning new build property located on the private Coombe Hill Estate, Kingston upon Thames.

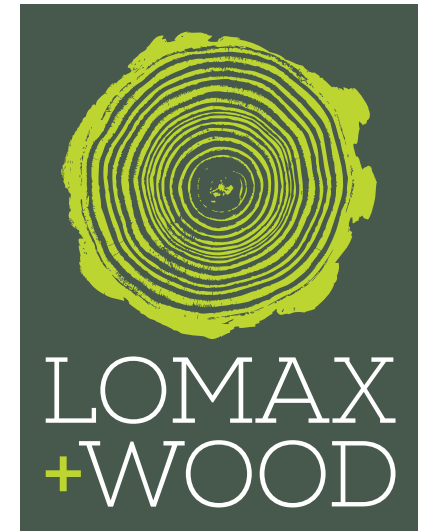






## Another 'Ace' Project for Lomax + Wood

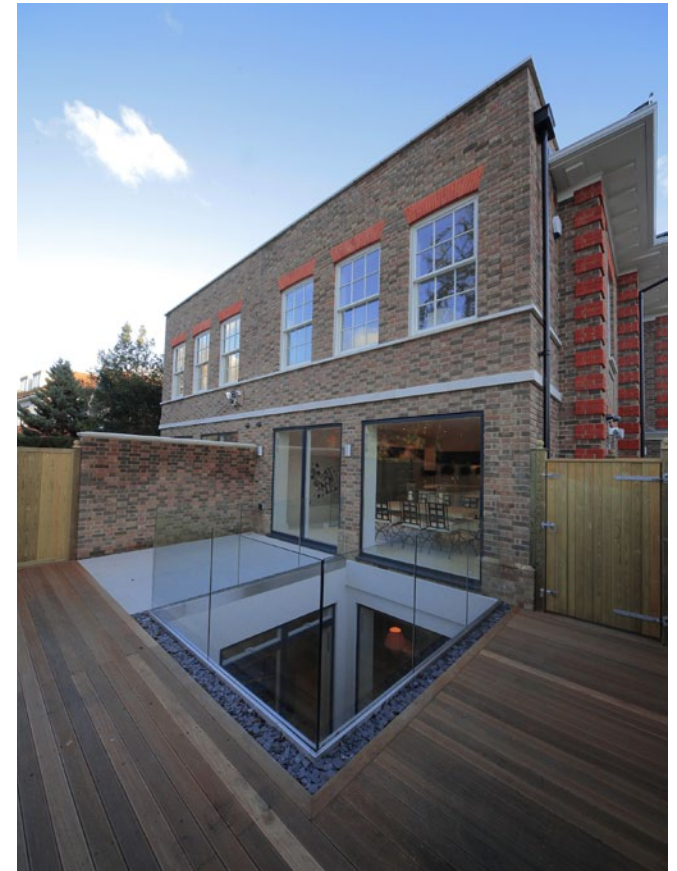
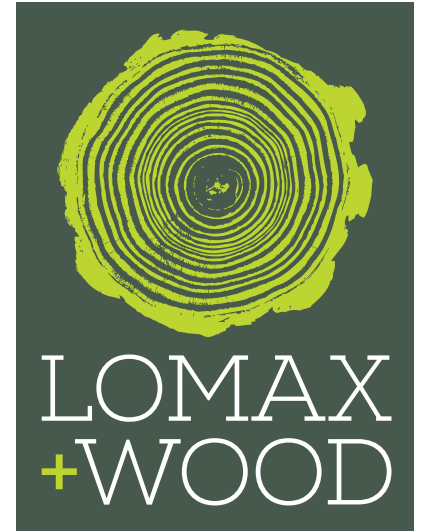
High performance, made-to-order wooden windows and doors have been specified by a leading London-based property developer who has again chosen Lomax + Wood for their most recent project in Wimbledon, South West London.





## Wimbledon, Arthur Road

High performance fenestration by specialist manufacturer Lomax + Wood has been specified by a leading property developer, in the design and construction of a fabulous modern mansion in Arthur Road, Wimbledon, SW19.





## Arts and Crafts in Woking, Surrey

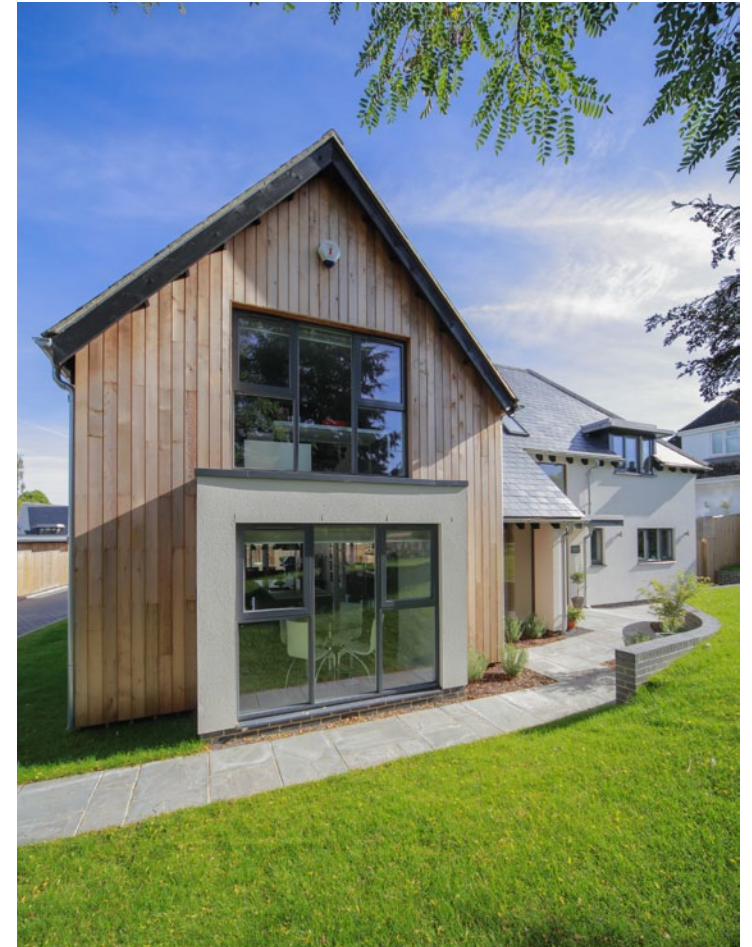
Dual finish wooden windows and doors were used in the renovation of this delightful 1900's Arts and Crafts style property. The family chose from the Lomax + Wood made-to-order range of timber flush casements and doors.





## Contemporary Alu-Clad Windows and Doors

Aluminium-Clad timber flush casement windows and doors from the Contemporary collection by Lomax + Wood have been specified for a modern, new-build, private development just minutes from the cosmopolitan city centre of Oxford.



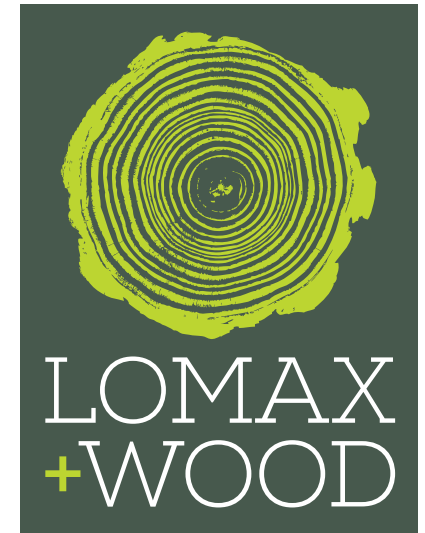




## Lomax + Wood Windows Breathe New Life into Victorian Conversion

Made-to-order, period-style timber windows and doors from Lomax + Wood have been specified by a leading London-based developer in the ambitious and challenging conversion of The Book House, once the offices of the Wandsworth District Board of Works, to 17 private apartments.





## At Peace in Suffolk

Made-to-order wooden double glazed windows and doors by Lomax + Wood have been installed in this stunning new build at the Maharishi Peace Palace. The project was one of significant importance and provides a place of learning and tranquil ambience for every visitor. The development offers conference and meeting rooms, alongside 28 en suite bedrooms.







**LOMAX+WOOD LTD**

**Essex Showroom**  
**North Barn, Thoby Lane**  
**Mountnessing**  
**Essex CM15 0SY**

**TEL: 01277 353857**  
**EMAIL: [enquiries@lomaxwood.co.uk](mailto:enquiries@lomaxwood.co.uk)**

