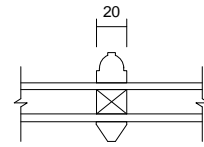
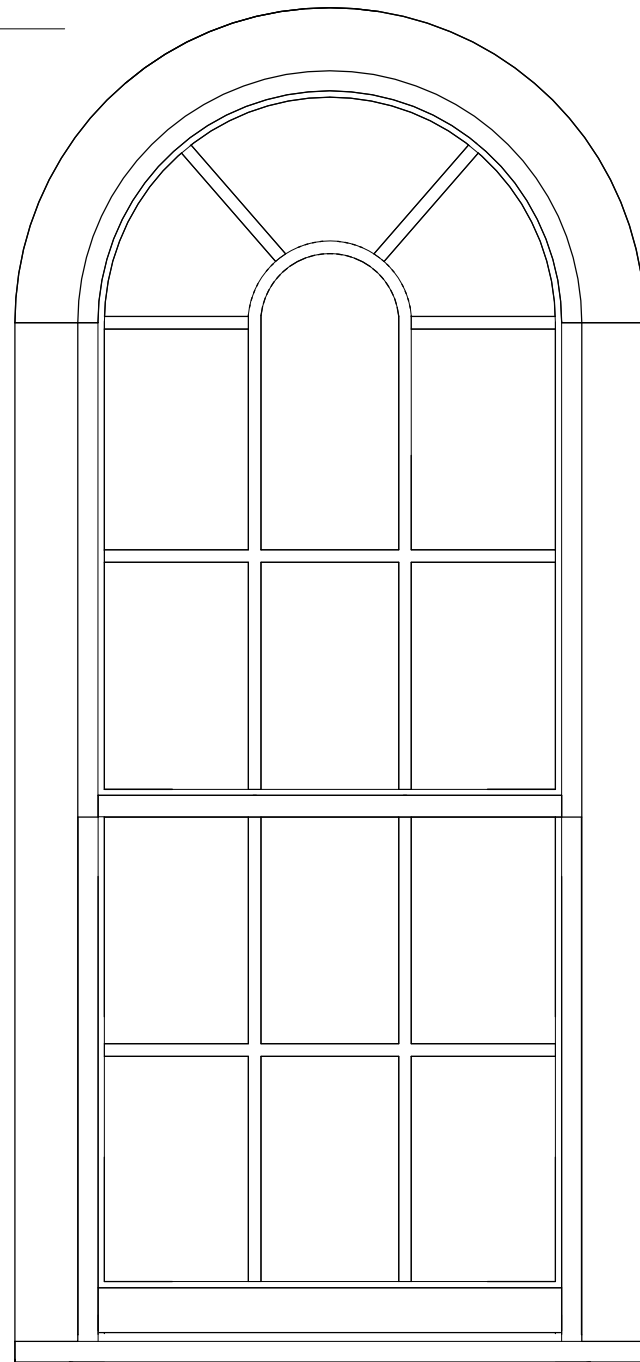


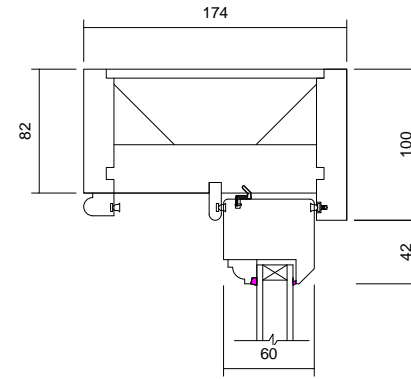
03 Jamb Detail  
1 : 5



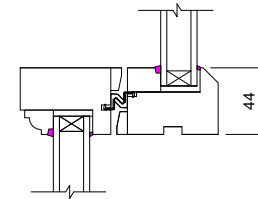
04 Glazing Bar Detail  
1 : 5



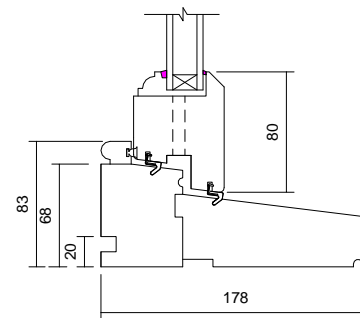
02 Front View  
1 : 12



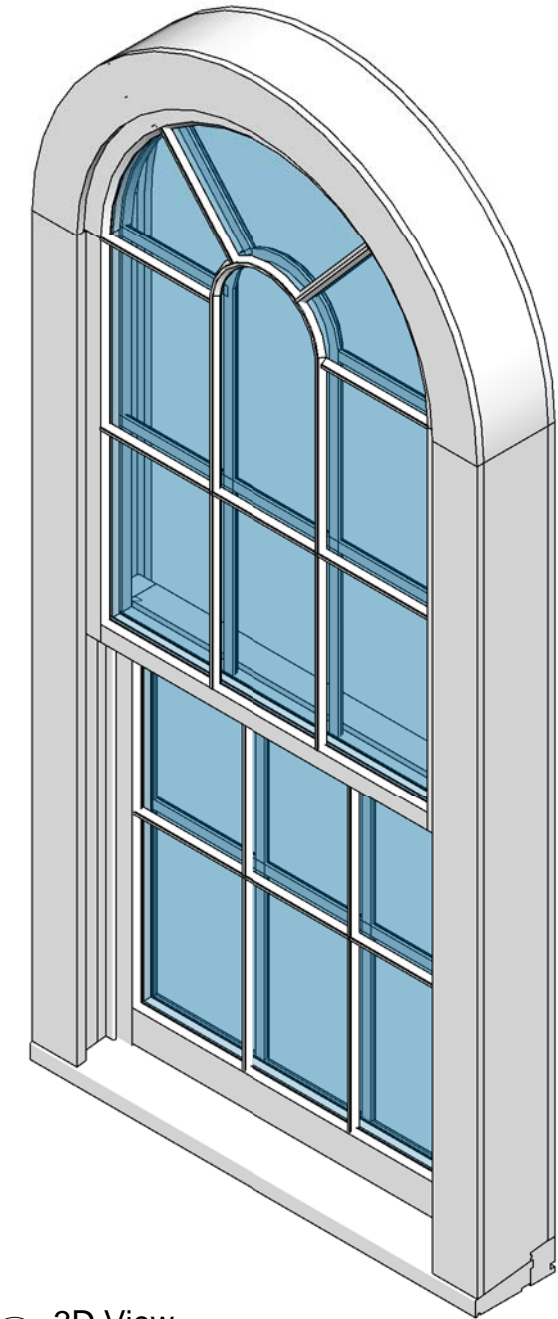
05 Head Detail  
1 : 5



06 Meeting Rail Detail  
1 : 5




07 Cill Detail  
1 : 5



01 3D View

| Window Schedule |       |
|-----------------|-------|
| Height          | Width |
| 2150            | 1000  |

NOTE! ELEVATION DRAWINGS VIEWED EXTERNALLY

|   |                          |  |                  |
|---|--------------------------|--|------------------|
|  <p>Made-to-order<br/>timber<br/>windows<br/>and doors</p> | Drawing Number<br>B1/96S |  | Drawn By<br>DH   |
|   | Scale<br>1:5 & 1:12 @ A4 | Revision   | Date<br>26/09/16 |
|   | Customer                 |  |                  |
|   | Project<br>TBC           |  |                  |
| T 01277 353857 <a href="http://www.lomaxwood.co.uk">www.lomaxwood.co.uk</a>   |                          | © COPYRIGHT 2016 LOMAX-WOOD. ALL RIGHTS RESERVED |                  |